

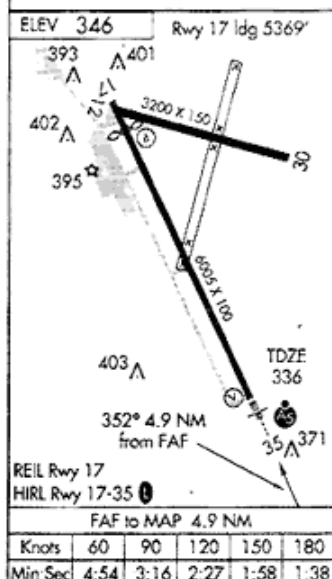
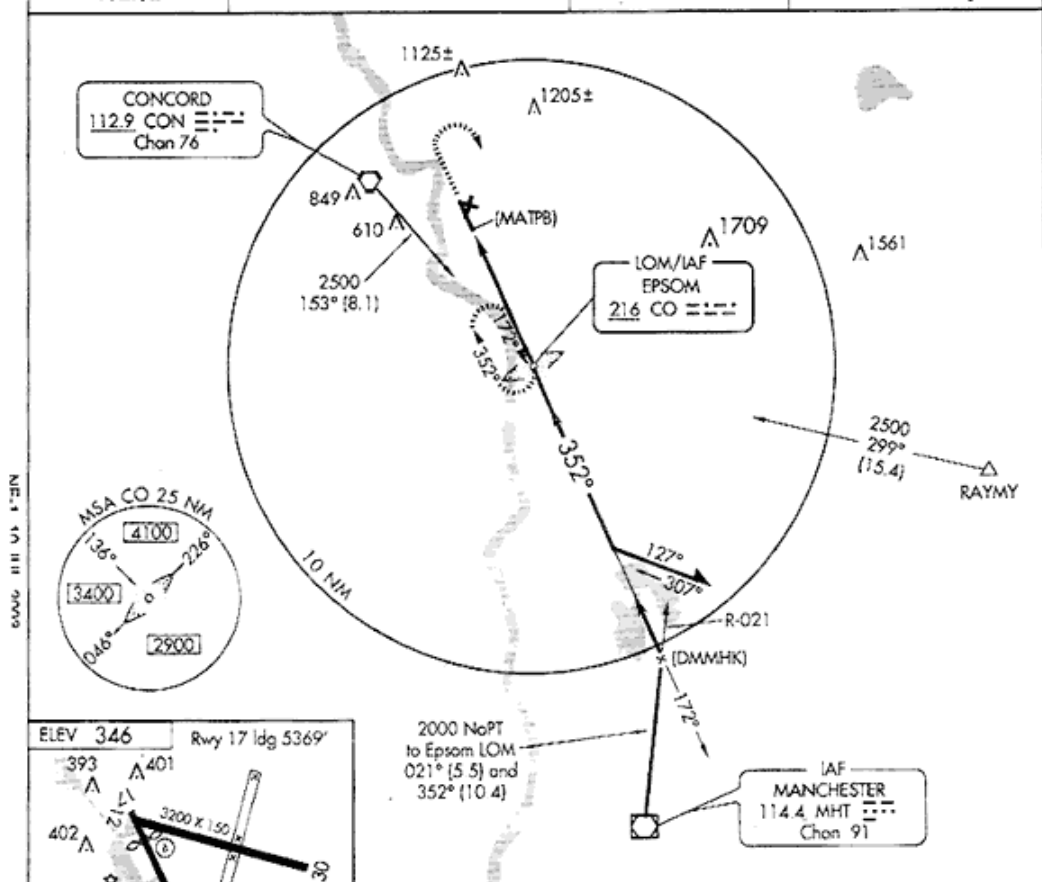
CONCORD, NEW HAMPSHIRE

110  
AL-95 (FAA)NDB or GPS RWY 35  
CONCORD MUNI (CON)

NDB CO	APP CRS	Rwy Idg	6005
216	352°	TDZE	336
		Apt Elev	346

Inoperative table does not apply  
to S-NDB Cots A and B.MISSED APPROACH: Climb to 2000, then climbing right  
turn to 2500 via 172° course to EPSOM LOM and hold.

ASOS	MANCHESTER APP CON	CLNC DEL	UNICOM
132.32	127.35 385.45	133.65	122.7 (CTAF) 0



2000	2500	CO	LOM	Remain within 1.0 NM
CRS 172°	216		172°	2500
(MATPB)	352°	2000	3.11°	TCH 51
4.9 NM				
CATEGORY	A	B	C	D
S-35	1060-1 724 (800-1)		1060-1½ 724 (800-1½)	1060-2 724 (800-2)
CIRCLING	1060-1 714 (800-1)		1060-2 714 (800-2)	1100-2½ 754 (800-2½)

CONCORD, NEW HAMPSHIRE

Amdt 5A 03191

43°12'N - 71°30'W

CONCORD MUNI (CON)  
NDB or GPS RWY 35

NE-1, 10 JUL 2003